

# Files2Move®

For Backup Harlequin™ Page Buffer Files

By



# *Manual*

721 Software Ltd.  
The Netherlands

Internet [www.721Software.com](http://www.721Software.com)  
E-mail [info@721Software.com](mailto:info@721Software.com)

**Copyright 2001-2005: 721 Software Ltd.**

It is not allowed to reproduce and/or copy in any form this manual without written permission.  
721 Software Ltd. can't accept any liability for the use of the program or any errors in this manual.  
Subject to technical modifications at any time without prior notice.

The products mentioned in this manual are registered trademarks of the appropriate owner/manufacturer.

Date of issue: January 2005 – software version 1 – build 7

## Content

		Page
1.	<a href="#">Introduction</a>	5
2.	<a href="#">Installation of Files2Move</a>	5
3.	<a href="#">Explanation of Menu Bar</a>	7
3.1.	How to backup PGB-Files	8
3.2.	Files2Move active in memory	13
3.3.	How to Restore PGB-Files	14
4.	<a href="#">Contact details</a>	16
5.	<a href="#">License Agreement</a>	17

## **1 - Introduction**

Files2Move (*files-to-move*) for Backup is developed to backup and restore Harlequin™ Page Buffer files. It has the power of the full version of Files2Move however limited to Backup and Restore PGB-files only.

In this manual we will briefly describe the installation and basic setup of Files2Move.

Do you have any additional questions please send an E-mail to [PGB-Support@721Software.com](mailto:PGB-Support@721Software.com)

## **2 - Installation of Files2Move**

You can always download the latest release of "Files2Move for Backup" from our homepage [www.721Software.com](http://www.721Software.com).

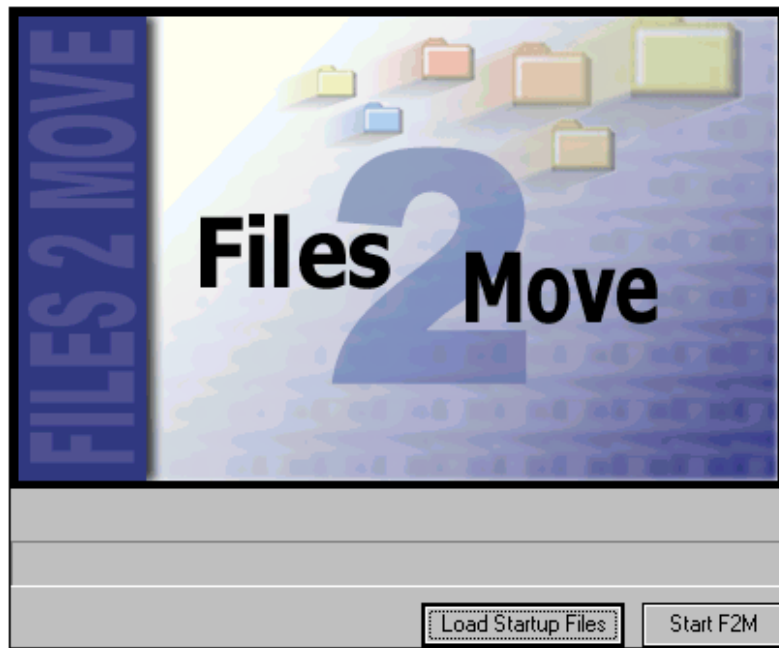
### **Step by step installation**

1. Double click on the installer to start the installation
2. Please read the software license agreement and click on Yes to continue
3. Define a directory or use the default directory, click on next
4. Click on finish
5. Click on Start, Programs, in "721 Software" you will find the startup of Files2Move
6. Start the program <see screenshot>

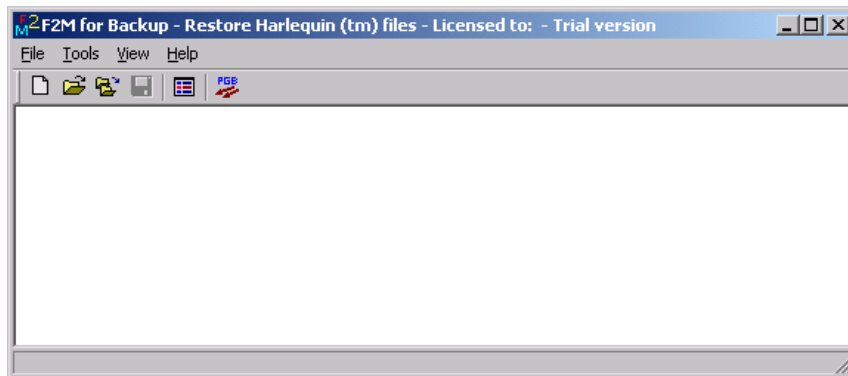


If you don't have a code please click on "TryF2M"

Click on Start F2M <see screenshot>

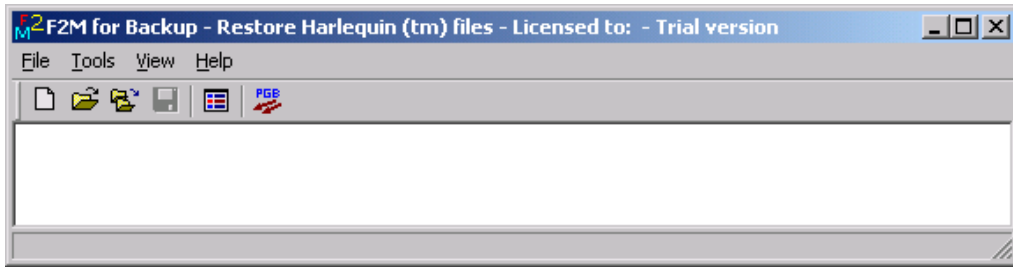


7. Files2Move main screen will become visual <see screenshot>

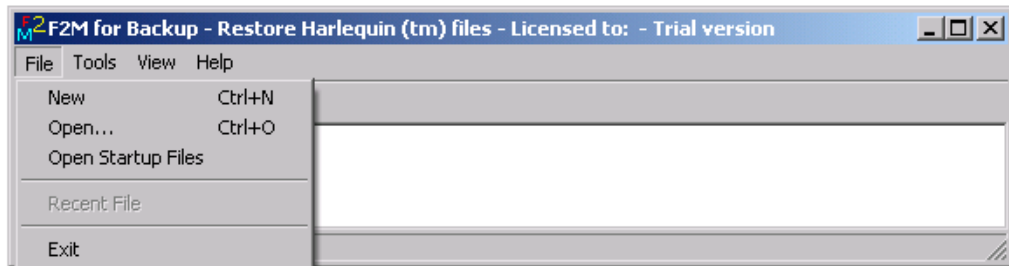


### 3- Explanation of Menu Bar

If you start up Files2Move the following main menu bar will show up. <see screenshot>



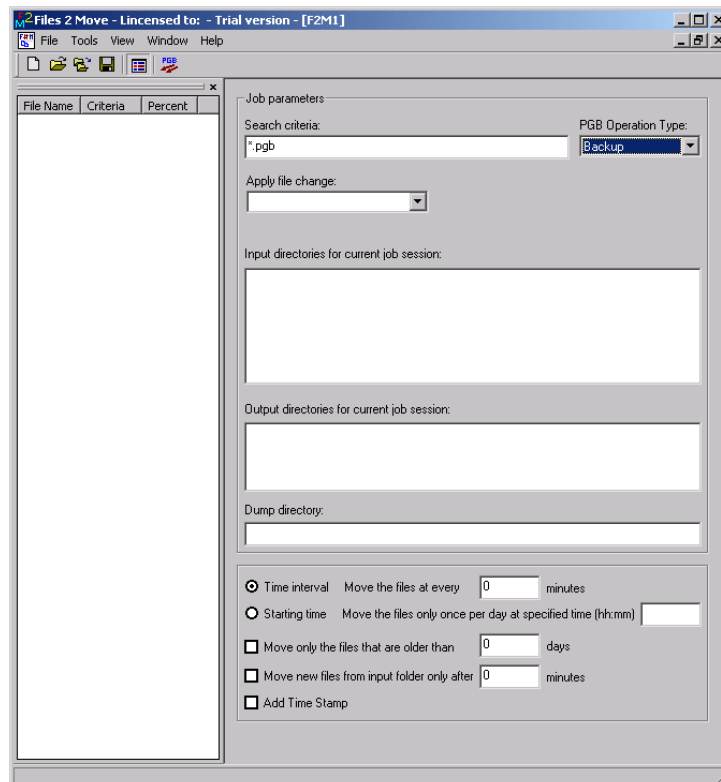
Click on "File" <see screenshot>



Explanations of the options you can select:

- New create a new job
- Open open an existing job
- Open Startup files open all existing jobs that are saved in a pre-defined folder
- Exit close the application

Click on New <see screenshot>

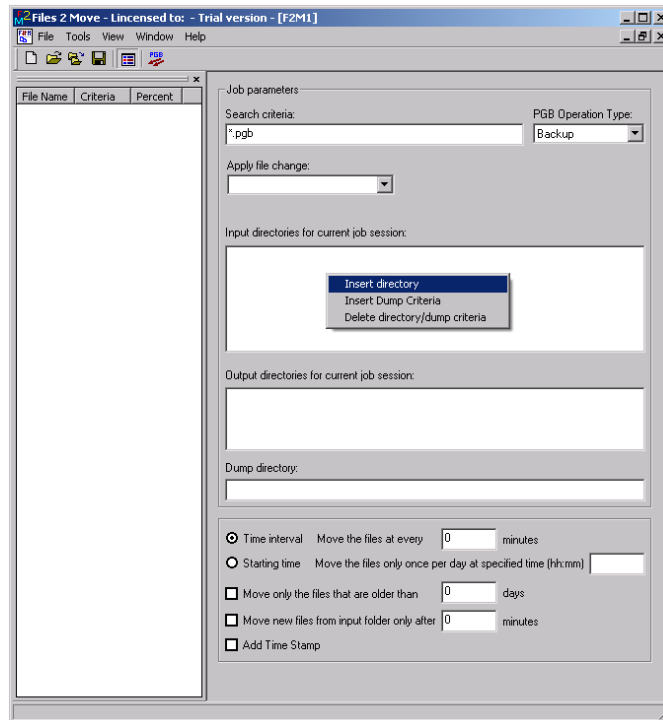


## How to backup PGB-files

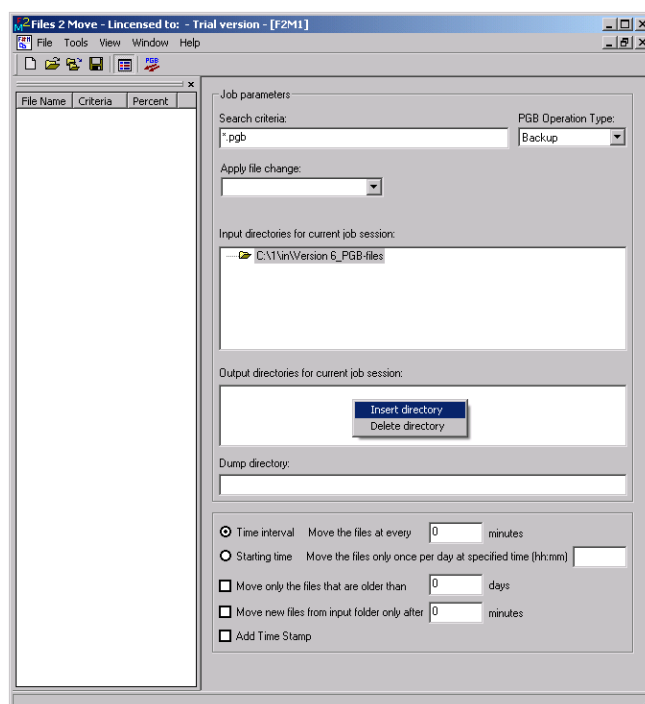
There are two options, which you can select at PGB Operation Type: Backup and Restore. Select Backup

The option "Apply file change" can be activated on request and if it is needed.

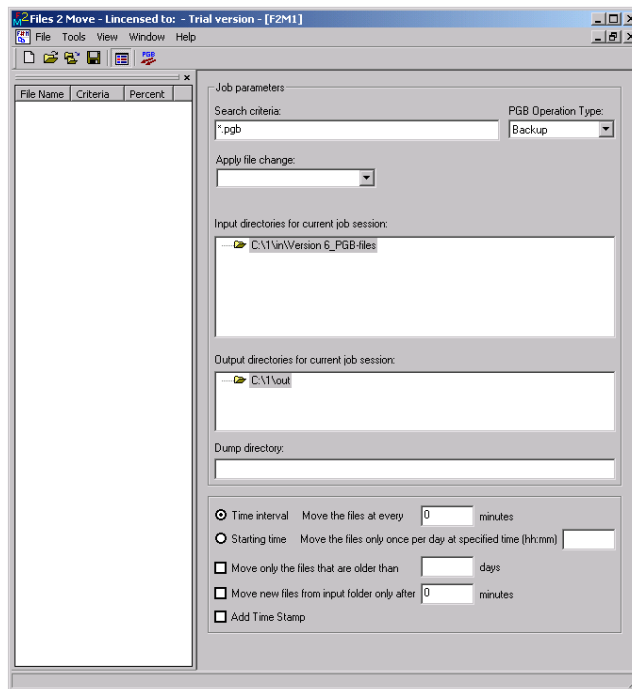
Click within the white area "Input Directories for current job session" with the right mouse button <see screenshot>



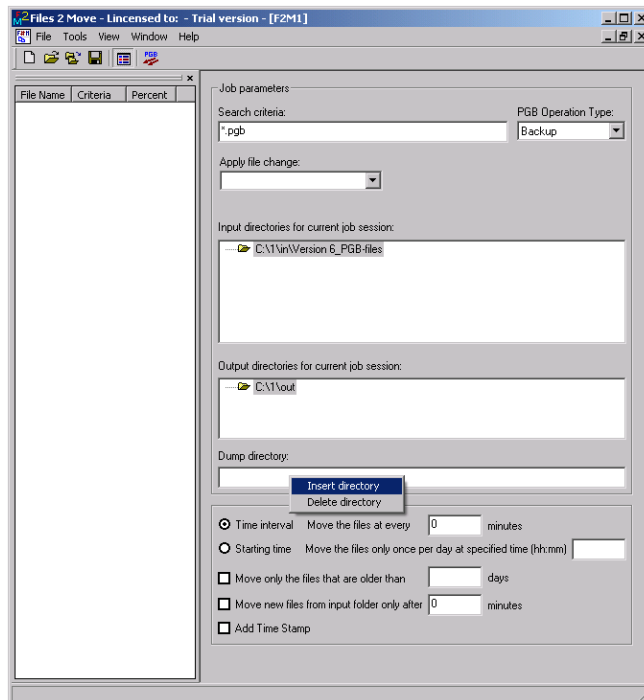
Select the option "Insert Directory" and select the directory where the PGB-files are stored. Click within the white area "Output Directories for current job session" with the right mouse button <see screenshot>



Select the directory where the Backup files should be saved <see screenshot>.



Click within the white area "Dump Directory" with the right mouse button <see screenshot>



Select a directory (you must select a directory however this feature is only useful when working with Files2Move incl. the E-mail- and general moving features).

At the next step you are able to select the two different criteria:

- Time interval: X minutes
  - o With this feature you select if Files2Move must check to backup files every X-minutes

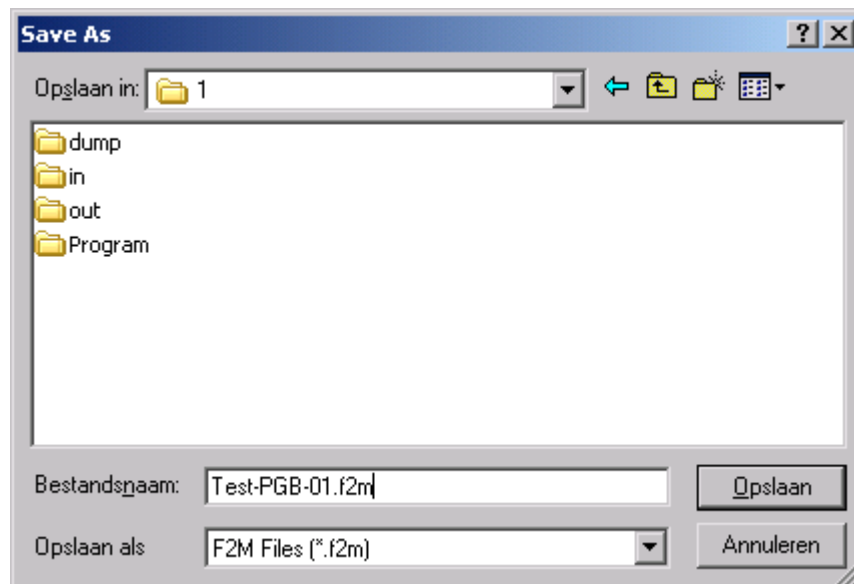
- Starting Time: hh:mm
  - o With this feature you select if Files2Move must only check to backup files once per day at a specific time

After selecting one of the above you are now able to define the following

- Move only the files that are older than Y-days
    - o With this feature you select which files Files2Move must backup. Files that are stored within the PGB-directory for at least Y-days
  - Move only the files that are older than Z-minutes
    - o With this feature you select which files Files2Move must backup. Move new files only after Z-minutes
- Note: this feature is developed for a specific need

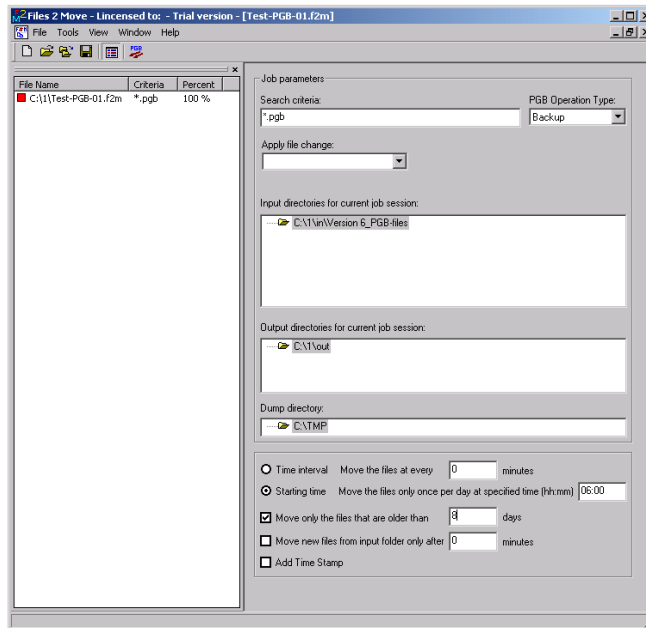
As soon as Files2Move will backup a file and the last feature Add Time Stamp is selected a time stamp will be added within the file name.

To save this configuration click "Ctrl + S" or on File and Save <see screenshot>

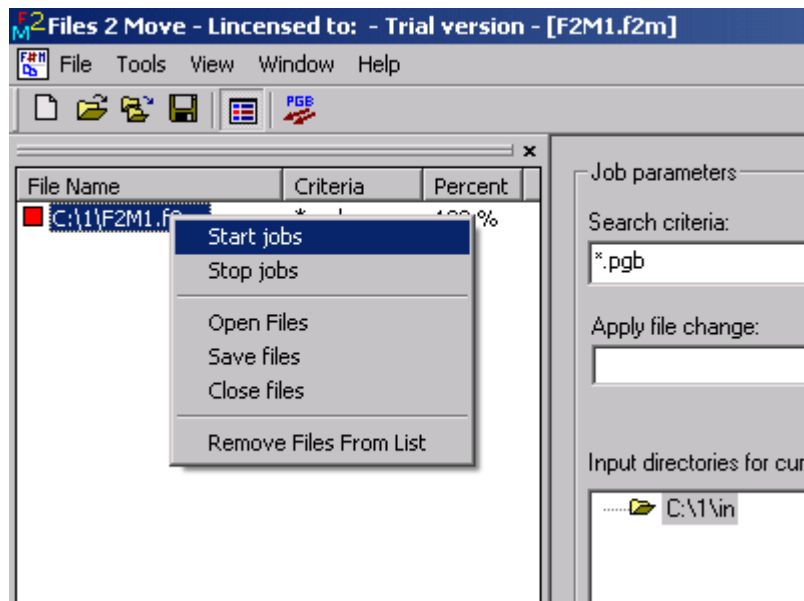


Type a name for this configuration and select the directory, click on Save

After saving the configuration within the left part of the Files2Move screen the configuration will show up marked with a red square.



Click right mouse button on this line <see screenshot>



Select the 1<sup>st</sup> option to start the job. The icon will change from red square into a hourglass. Files2Move will now start Backup the PGB-files the way you have defined.

Example of the procedure:

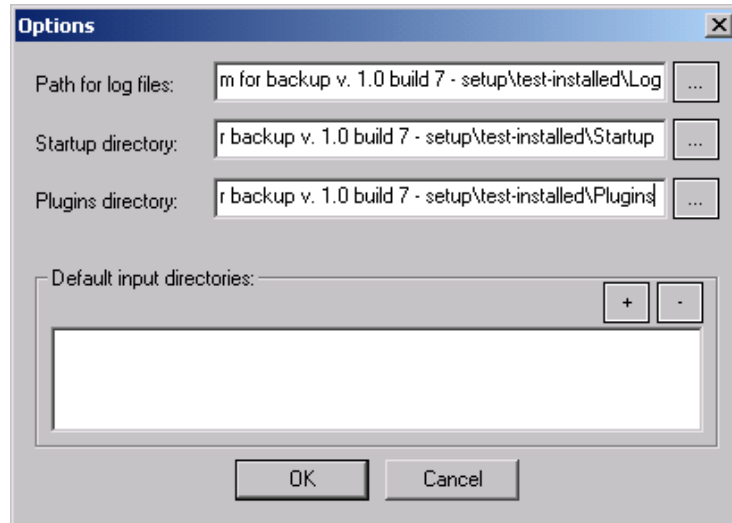
- PGB-files are stored within a directory
- Files2Move must backup files which are older then 10-days
- If a file is older then 10-days Files2Move will look into the file, will change the PGB-file name (00000027.PGB) into a logic file-name (2. Floorwerk 2002 \ (PANTONE 287 CV\)
- This file will be saved within the directory which was specified

If you would like to stop this job, select the job, click right mouse button and select "Stop jobs".

To restore the files please follow the instructions at page 14 "How to Restore".

Continuation of “chapter 3 “**Explanation of Menu Bar**”

Click on “Options” <see screenshot>



Explanation:

Path for log files  
Startup directory

Files2Move will keep track of all actions and will be saved in log files  
If you have multiple jobs it is possible to save those in one a “hot folder” so that the next time you will start Files2Move all jobs will start at one

Plug-in directory

at specific customer wishes we would be able to create additional features. Those features will be implemented as plug-ins

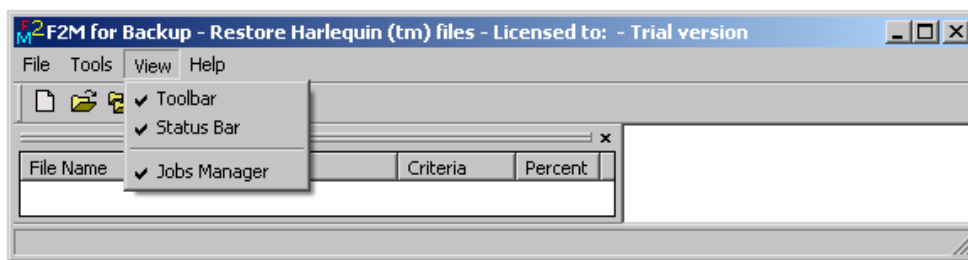
Default input directory

Select here the default input directories. At the moment you must select an input directory (described in Configuration) you can select from this list

Note:

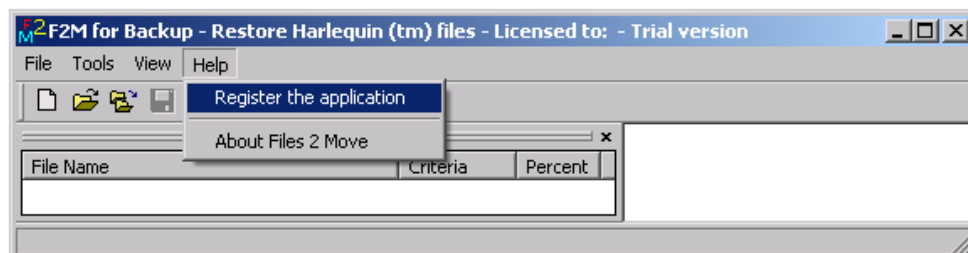
At that time it is still possible to select another input directory, which is not in the list

Click on “View” in the menu bar <see screenshot>



Hereby you can select which parts of the Files2Move interface you would like to see.

Click on “Help” in the menu bar <see screenshot>



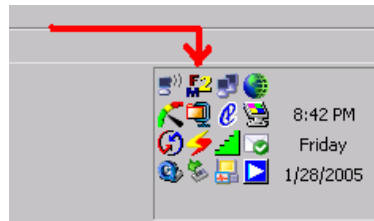
Click on "About F2M" <see screenshot>



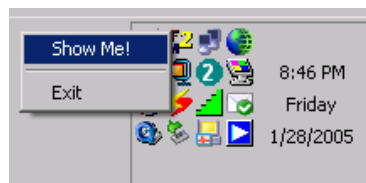
Within this menu you can select to go to our homepage and/or send us E-mail. If you have any questions/comments and/or remarks ... thanks in advance!

### **Files2Move active in Memory**

After you started Files2Move it will be loaded in the memory. See the F2M-icon <see screenshot>



When you would like to close the program you can click on File and Exit. The program interface is then closed but it is still running in the memory. If you would like to stop the program you have to right mouse click on the F2M-icon and select Exit <see screenshot>

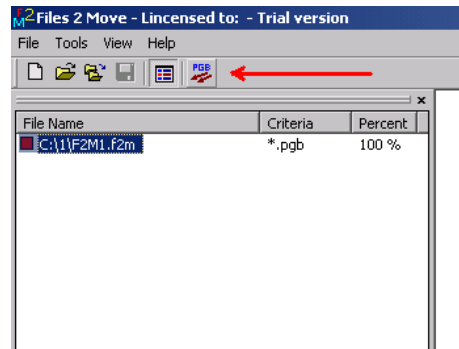


Note:

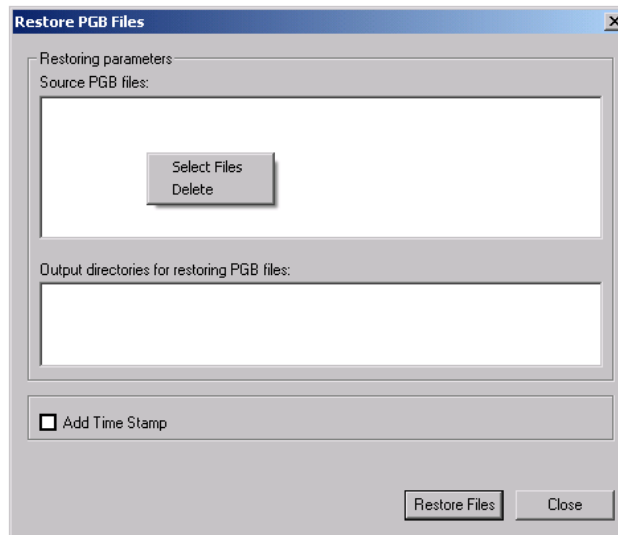
When you select "Show me!" you will get the Files2Move interface

## How to Restore the files

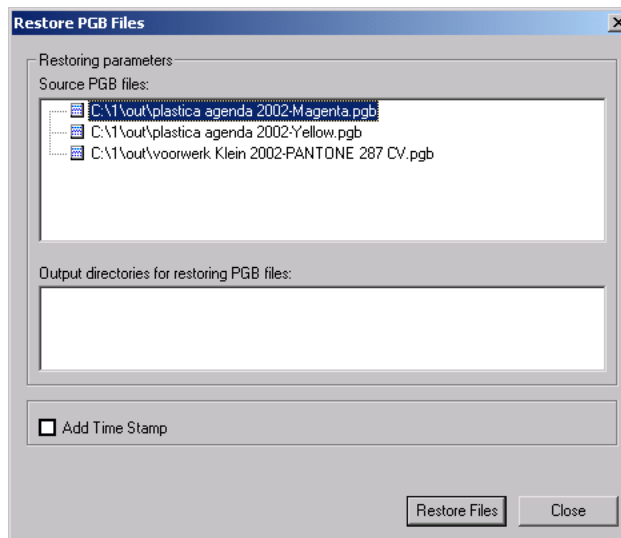
Select within the top menu bar the small PGB-icon <see screenshot>



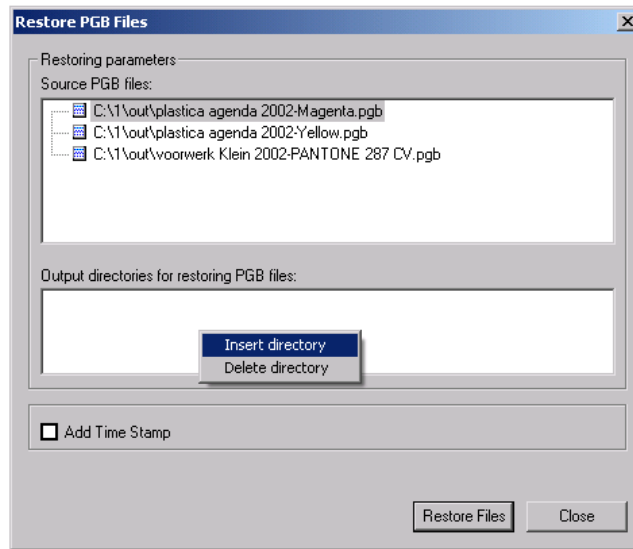
Select with the new pop-up screen the directory where the files which have been backed up <see screenshot>



Click on Select Files <see screenshot>



Click with the white area at “Output directories for restoring PGB-files” <see screenshot>



Click on the button “Restore Files” to restore the files. Files2Move will now change the name of the back into the specific PGB-file names.

Close this window by clicking on the button Close.

The above instruction was based on a manual Restore, which is most common. However if you would like to Restore the file based a specific criteria you must select the PGB Operation Type Restore within the popup screen at File and New.

**4 - Contact details:**

721 Software Ltd.  
The Netherlands

Internet [www.721Software.com](http://www.721Software.com)

E-mail [info@721Software.com](mailto:info@721Software.com)

## **5 - License agreement**

### END-USER LICENSE AGREEMENT

#### IMPORTANT - READ CAREFULLY

READ THE FOLLOWING TERMS AND CONDITIONS CAREFULLY BEFORE USING THIS PRODUCT. BY YOUR USE OF THIS PRODUCT YOU AGREE TO BE BOUND BY THE TERMS AND CONDITIONS OF THIS LICENSE AGREEMENT. IF YOU DO NOT AGREE TO BE BOUND BY THESE TERMS AND CONDITIONS, PROMPTLY RETURN THIS PRODUCT UNUSED TO YOUR PLACE OF PURCHASE. UPON RETURN OF YOUR UNUSED PRODUCT, YOUR FULL PURCHASE PRICE WILL BE REFUNDED.

1. License. In this license agreement ("License Agreement"), you, the purchaser of the license rights granted by this agreement, are referred to as "Licensee" or "You". 721 Software Ltd. ("Licensor") grants Licensee the non-exclusive license to use this software ("Software") and documentation ("Documentation"). In this License Agreement, the Software and Documentation and any copies or modifications are referred to as the "Licensed Product."

All rights in and to the Licensed Product, including, but not limited to, copyrights and trade secrets, belong to Licensor and Licensor holds title to each copy of the Software. The Software must be used on only a single computer at one time. Licensee shall not sublicense, transfer or distribute the Licensed Product to others, and this License Agreement shall automatically terminate upon such transfer or distribution. Licensee shall not copy or modify the Licensed Product or any portion thereof, except that Licensee may make one copy of the Software only for the purpose of backup so long as all copyright and other restrictive and proprietary notices are reproduced and included on the backup copy.

2. Term. This License Agreement is effective until terminated. Licensee may terminate this License Agreement by returning the Licensed Product to Licensor. Licensor may terminate this License Agreement if Licensee breaches any term or condition of this License Agreement. Upon termination of this License Agreement for any reason, Licensee shall return the Licensed Products and all copies to Licensor. All provisions of this Agreement relating to disclaimers of warranties, limitations of liability, remedies, damages and Licensor's proprietary rights shall survive any termination of this License Agreement.

3. Object Code. The Software is delivered in object code only. Licensee shall not reverse compile, disassemble or otherwise reverse engineer the Software.

4. Limited Warranty. Licensor does not warrant that the functions contained in the Licensed Product will meet Licensee's requirements or that the operation of the Software will be uninterrupted or error-free. Licensor does warrant that the media on which the Software is furnished will be free from defects in material and workmanship under normal use for a period of sixty (60) days from the date of delivery ("Warranty Period"). Any other software and any hardware furnished with or Licensor does not warrant accompanying the Software. This limited warranty will not apply in the event of failure of the Licensed Product because of accident, abuse or misapplication by Licensee. Licensee's sole and exclusive remedy under this limited warranty is the replacement of any defective physical media on which the Software is furnished, as provided below. Any replacement software will be warranted for the remainder of the original Warranty Period. To receive a replacement for defective media under this limited warranty, return the defective media to Supplier during the Warranty Period with proof of payment. This warranty gives you specific legal rights. You may have other legal rights, which vary from jurisdiction to jurisdiction.

EXCEPT AS PROVIDED ABOVE, THE LICENSED PRODUCT IS PROVIDED "AS IS" WITHOUT WARRANTY OF ANY KIND, EITHER EXPRESS OR IMPLIED, INCLUDING, BUT NOT LIMITED TO, THE IMPLIED WARRANTIES OF MERCHANTABILITY AND FITNESS FOR A PARTICULAR PURPOSE, AND THE ENTIRE RISK AS TO THE QUALITY AND PERFORMANCE OF THE LICENSED PRODUCT IS WITH LICENSEE.

5. LIMITATION OF LIABILITY. LICENSOR'S SOLE OBLIGATION OR LIABILITY UNDER THIS LICENSE AGREEMENT IS THE REPLACEMENT OF DEFECTIVE MEDIA ACCORDING TO THE LIMITED WARRANTY ABOVE. IN NO EVENT WILL LICENSOR BE LIABLE FOR ANY DAMAGES WHATSOEVER (INCLUDING, WITHOUT LIMITATION, SPECIAL, INCIDENTAL, CONSEQUENTIAL OR INDIRECT DAMAGES FOR PERSONAL INJURY, LOSS OF BUSINESS PROFITS, BUSINESS INTERRUPTION, LOSS OF BUSINESS INFORMATION OR ANY OTHER PECUNIARY LOSS) ARISING OUT OF THE USE OR INABILITY TO USE THE SOFTWARE OR DOCUMENTATION (OR ANY HARDWARE FURNISHED WITH THE SOFTWARE) OR THE PROVISION OF OR FAILURE TO PROVIDE SUPPORT SERVICES, EVEN IF LICENSOR HAS BEEN ADVISED OF THE POSSIBILITY OF SUCH DAMAGES, OR FOR ANY CLAIM BY ANY THIRD PARTY. LICENSOR SHALL HAVE NO LIABILITY TO LICENSEE FOR THE INFRINGEMENT OF PROPRIETARY RIGHTS BY THE LICENSED PRODUCTS OR ANY PART OF THEM. IN NO EVENT SHALL LICENSOR'S LIABILITY EXCEED THE PURCHASE PRICE FOR THE SOFTWARE. THE DISCLAIMERS AND LIMITATIONS SET FORTH HEREIN SHALL APPLY REGARDLESS OF YOUR ACCEPTANCE OF THE SOFTWARE.

6. Indemnification. Licensee shall indemnify and hold harmless Licensor, its officers, employees and agents from and against any and all liabilities, claims, damages, losses or injury to property or persons, including Licensor, in connection with the use of the Developed Product which results from a breach of Licensee's obligations under this License Agreement or the fault or negligence of Licensee or any of your officers, employees or agents.

7. No Upgrades or Maintenance. Licensor shall have no obligation to supply Licensee with any support, service, enhancements and upgrades to the Software. In no event shall Licensor provide Licensee with support services related to the Software unless Licensee has filed a proper registration with Licensor. Licensor may use the information provided in such registrations for its business purposes, including product support and development. In the event Licensor supplies Licensee with any upgrade to the Software, Licensee's use of such upgrade shall be subject to the terms and conditions of this License Agreement.

8. General. Any hardware or software provided to Licensee by Licensor shall not be exported or re-exported in violation of any export provisions of the United Kingdom or any other applicable jurisdiction. Any attempt by Licensee to sublicense, assign or transfer any of the rights, duties or obligations hereunder is void. This Agreement shall be governed by and interpreted under the laws of the United Kingdom, without regard to conflicts of laws. Any controversy or claim arising out of or relating to this License Agreement, or the breach thereof, shall be settled by arbitration in accordance with the Expedited Procedures and Rules of the American Arbitration Association, and judgment on the award rendered by the arbitrator(s) may be entered in any court having jurisdiction; provided, however, that nothing in this Section shall prevent Licensor from commencing judicial proceedings for injunctive or other equitable relief in connection with any alleged violation or threatened violation of the License Agreement which gives rise to a basis for injunctive or equitable relief. Any arbitration pursuant to this Section shall take place in United Kingdom.

LICENSEE ACKNOWLEDGES THAT IT HAS READ AND UNDERSTANDS THIS LICENSING AGREEMENT AND AGREES TO BE BOUND BY ITS TERMS. LICENSEE FURTHER AGREES THAT THIS LICENSE AGREEMENT IS THE COMPLETE AND EXCLUSIVE STATEMENT OF THE AGREEMENT BETWEEN LICENSEE AND LICENSOR, AND SUPERSEDES ANY PROPOSAL OR PRIOR AGREEMENT, ORAL OR WRITTEN, AND ANY OTHER COMMUNICATIONS RELATING TO THE SUBJECT MATTER OF THIS LICENSE AGREEMENT.